

Goulburn Regional Art Gallery presents...

15 feb.– 16 mar. 2019

Goulburn Bustle

Permanent collection en masse



Children's Art Trail



About the Children's Art Trail

This Children's Art Trail has been developed for 'Goulburn Bustle' 15 feb.– 16 mar. 2019 and prepared by Sally O'Neill, Education Officer. O'Neill has a Bachelor of Fine Arts majoring in Painting and Drawing and Certificate III in Early Childhood, with several years experience in developing and delivering an Education Program for regional and public galleries.

The kit includes practical and theoretical activities for all ages suitable for before and after visiting the Gallery.

What is a permanent collection?

Goulburn Bustle is an exhibition showcasing over 100 artworks from the Goulburn Regional Art Gallery permanent collection. But what is a permanent collection? Unscramble the letters below to make some words relating to the collection.



Reg Mombassa, *Goulburn Gloaming*, 2012,
Lithograph, 40 x 52 cm

GLANOERI -----
TRA ---
LCAOL -----
CPTLURUES -----
GNPTNIAI -----
NTINADOO -----
SRACEMIC -----
SICQUOITIN -----
TASES -----

What is 'bustle'?

Circle all the synonyms for 'bustle' from the list below:

Rush	Flurry
Dash	Action
Move	Cat
Kiss	Excitement
Activity	Coffee
Leg	Fuss

What's in the collection find-a-word

AMENEIRO

BEAMISH

CULLEN

FLEMONS

FULGENCE

HANKE

JENEID

KIDSTON

LEBROCQUE

MAYO

NOLAN

OLSEN

PRIMROSE

QUILTY

RANKEN

RYRIE

TIPPETT

WARREN

S	P	C	O	E	K	N	A	H	T	A	V	R	A	H	C
A	R	L	A	R	H	C	A	B	N	E	D	U	A	L	N
N	I	O	H	S	I	M	A	E	B	L	O	N	G	O	Y
D	M	U	E	U	Q	C	O	R	B	E	L	Z	L	R	B
S	R	S	W	A	R	R	E	N	B	L	J	A	B	O	O
D	O	T	C	X	Y	A	A	M	E	A	N	N	L	F	O
I	S	E	A	Q	E	S	M	I	N	H	W	O	A	U	L
E	E	N	V	U	N	S	E	N	J	Y	T	S	K	L	M
N	F	N	A	I	O	A	N	Y	A	S	I	N	E	G	O
E	R	O	L	L	H	B	E	I	M	N	P	H	B	E	U
J	E	T	I	T	A	M	I	N	I	O	P	O	R	N	N
G	E	S	E	Y	M	O	R	G	N	M	E	J	O	C	T
R	M	D	R	D	O	M	O	A	E	E	T	N	U	E	F
A	A	I	E	P	F	Y	N	R	I	L	T	E	G	B	O
C	N	K	H	O	O	D	A	L	R	F	Z	S	H	O	R
E	N	E	K	N	A	R	M	M	Y	Y	U	L	B	Y	D
C	U	L	L	E	N	B	O	T	R	R	I	O	G	D	Q

Get to know the Permanent Collection in a fun find-a-word.

Hundreds of artists are represented in the Gallery's Permanent Collection. Find the last names of some of the artists listed above in the find-a-word.

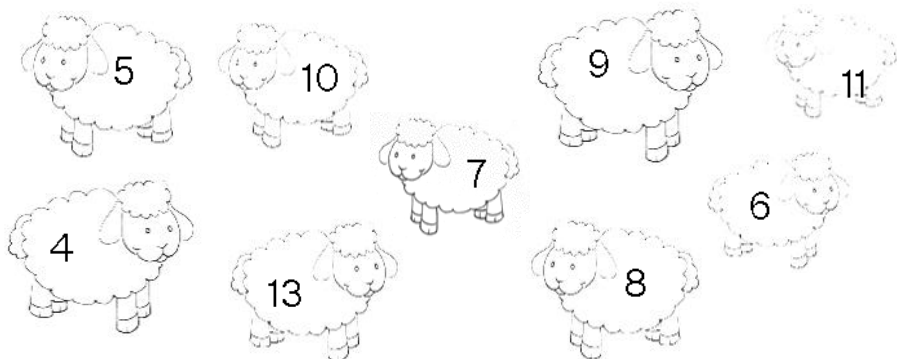
There are also plenty of artists names hidden in the find-a-word that aren't on the list. How many can you find?

For the littlest ones

Preschool and early stage 1, 4-6 years old

Counting sheep, don't fall asleep

The Gallery's permanent collection includes many artworks with sheep in them. How many works with sheep in them can you find in the Gallery? Circle your answer.

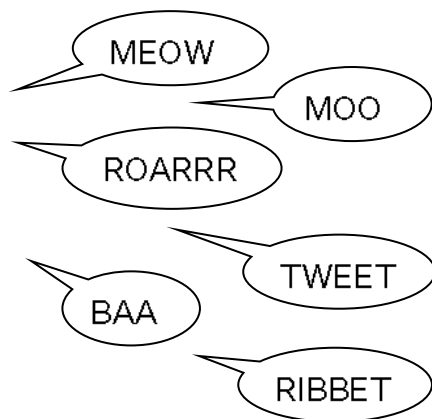


Why do you think there are so many artworks with sheep in them?



What does the sheep say?

Colour in your answer.



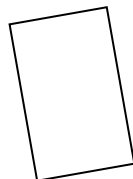
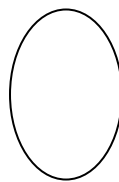
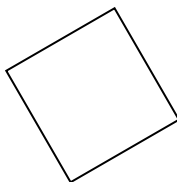
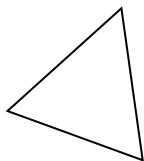
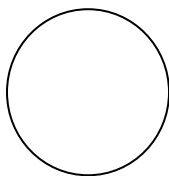
Charlotte Lebrocq, *Do You Really Want To Hard Ma*, 2016, Raku clay with glaze, 52 x 42 x 30 cm

Cat, dog, horse?

Troy Emery has made 'Colour Creature' using pom poms. What shape are the pom poms? Colour in your answer. Can you name all the shapes?



Troy Emery, *Colour Creature*, 2011, Polyurethane, glue, pom poms, glass eyes, 75 x 28 x 50 cm



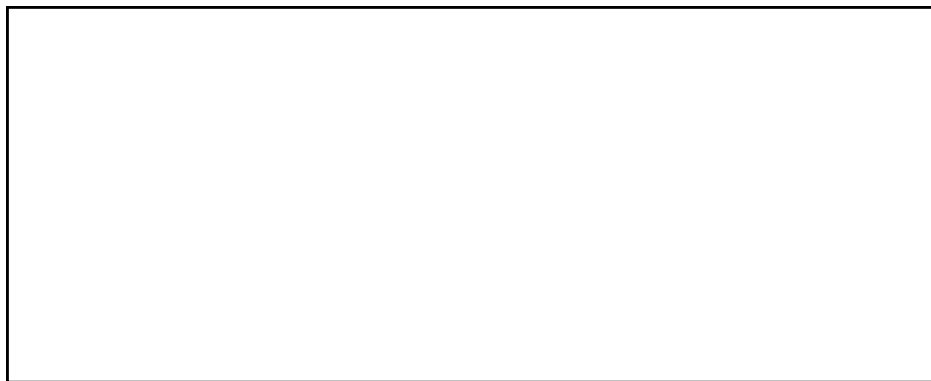
The creature is definitely very colourful! Circle the colours below that you can see in the artwork. Can you name them all?



What do you think the animal is?

Animals Everywhere!

There are lots of animals in artworks in Goulburn Bustle. Select an animal from a work and redraw it in a new place in the box below.

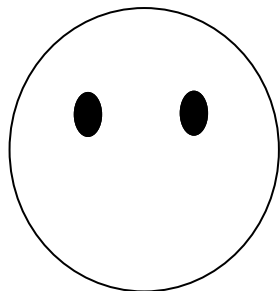




Cherry Hood, Untitled #4, 2002, Etching, 18.5 x 18.5 cm

What's up?

How do you think the boy in Cherry Hood's artwork is feeling? Draw your answer on the face below.



Emotion in motion

Artworks can make us feel different emotions. Artists use different colours, shapes, light and subjects to make us respond a certain way. Choose an artwork and answer the following questions:

What is the name of the artwork?

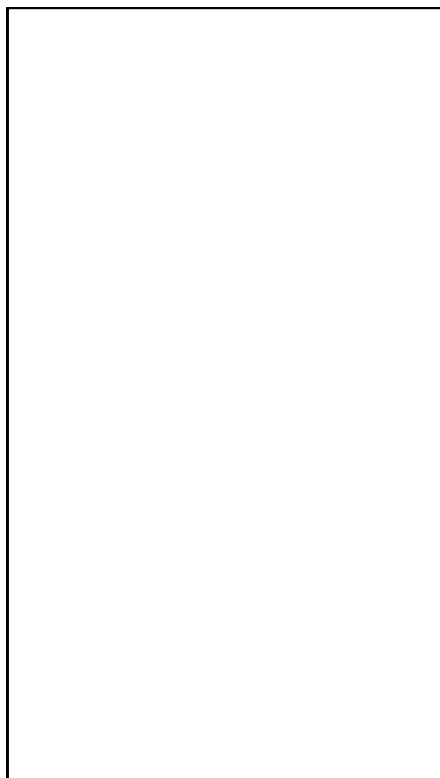
What can you see in the artwork?

What colours can you see?

Is the artwork dark or light?

How do you feel when you look at it? _____

Draw a picture of the work in the box opposite.



For the young ones

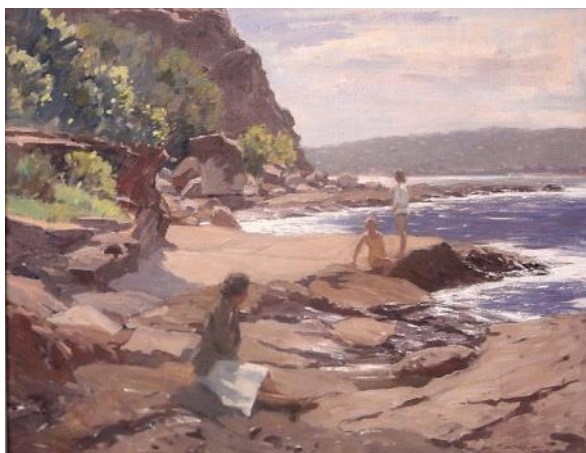
Stage 1– stage 2, 6-9 years old

Making meaning

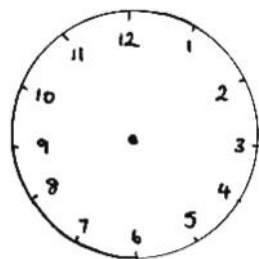
We know the words but
what do they mean?
How would you explain
the following terms?

Permanent _____

Collection _____



Henry Hanke, *Spring Morning*, undated, Oil on masonite, 72 x 87.5 cm



What's the time?

There is a soft light in Hanke's painting. What
time of day do you think it is? Draw hands on
the clock to show your answer.

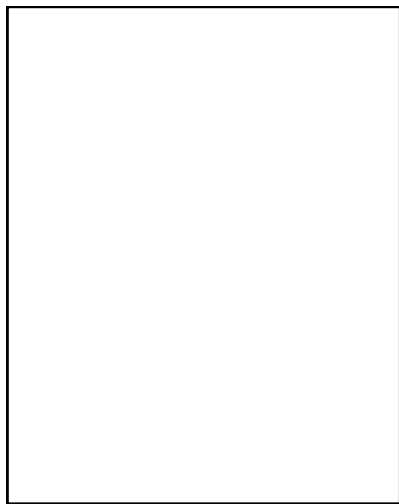
Who are the people and
what is going on in Hanke's painting?
Use your imagination to answer the
following questions:

The lady in the foreground is: _____

The people are at the beach because:

The person standing's favourite song:

Draw a picture of your family at the
beach in the box opposite.



Where would you rather be?

Imagine you are riding in Quilty's Torana and answer the following questions:

Who is sitting in the seat next to you?

Where are you going?

What song do you have playing?

Who is driving?

What can you see out the front windscreen?

Draw a picture of your view through the windscreen below.



Ben Quilty, *Torana*, 2007, Oil and aerosol on linen, 150 x 160 cm

Matchup

Draw a line to match the opposite terms from the two lists below:

Up	Coming
Going	Light
Black	Hard
Dark	Down
Soft	White

Can you describe an artwork using some of these words?



For those a little older

Stage 3, 9-12 years old



Mapping art

Danie Mellor draws on both his Indigenous heritage and Western map making in 'New Geography'. How are maps similar to traditional Aboriginal art?

.....

Danie Mellor, *New Geography I*, 2007, Press mould earthenware with underglaze, 120 x 50 x 4 cm

From here to there

Maps can help us travel to places we have never been before.

Imagine you are explaining to a visitor how they would travel from your school to your home. What symbols would you use to explain key aspects of the journey? Draw a map in the box opposite to help them on their way.



Gallery life

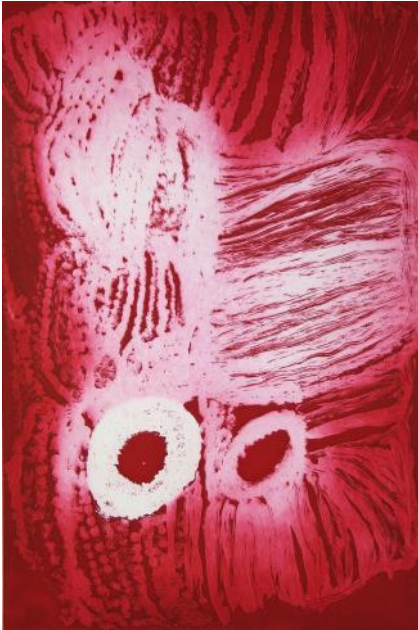
There are a range of people that work within a Gallery. Do you know what each of the positions below are responsible for?

Gallery Director

Education Officer

Program & Exhibitions Coordinator

Gallery Officer



Eubena Nampitjin, *Midjul*, 2012, Etching, 96 x 74 cm

Where is Balgo?

Eubena Nampitjin is a Warlayirti artist from the Aboriginal community Wirrimanu (Balgo) in Western Australia. Lookup Balgo and indicate on the map of Australia where you would find this small community.



Practical maths

Did you know that Gallery workers use lots of maths in day to day operations? Solve the following problems using your maths skills.

The Gallery Director arrives with three new artworks for the permanent collection. One is valued at \$12,000, another at \$4,000 and the third at \$550. What is the total value of the new works?

The Gallery needs to pay an artist a fee of \$675 for the delivery of a program. How much GST does the Gallery need to pay to the artist on top of the fee?

You need to hang 4 works in a row each 80 cm wide on a 4 metre long wall. The works must be evenly spaced with the same gap between each work and on either side. How wide will each of the five spaces be?

For those in between

Stage 4 and 5, 12-16 years old

Art is not just about art!

Artists sometimes use their art to make comment on broader topics. Select a work in the exhibition and read the accompanying work details and text. In which class at school would you expect to talk about these topics?

Science English Mathematics
Religious studies PD/H/PE

Sheep are baaaad for the environment

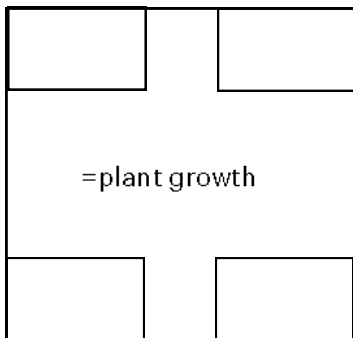
Plants need four key requirements in order to grow. Write one in each corner of the square to complete the diagram.

What key requirement do farm animals such as sheep remove from the equation and how?

Dale Cox, *Usurper- Pastoral*, 2016, Acrylic and gold enamel on board, 90 x 120 cm



Merriek Fry, *Eroded Gully*, 1975, Acrylic on board, 120 x 107 cm



Getting worse

Once plants such as grass are unable to grow, water and wind are able to break down the earth. What is this process called? Circle your answer.

erosion photosynthesis
evaporation

Collection Crossword

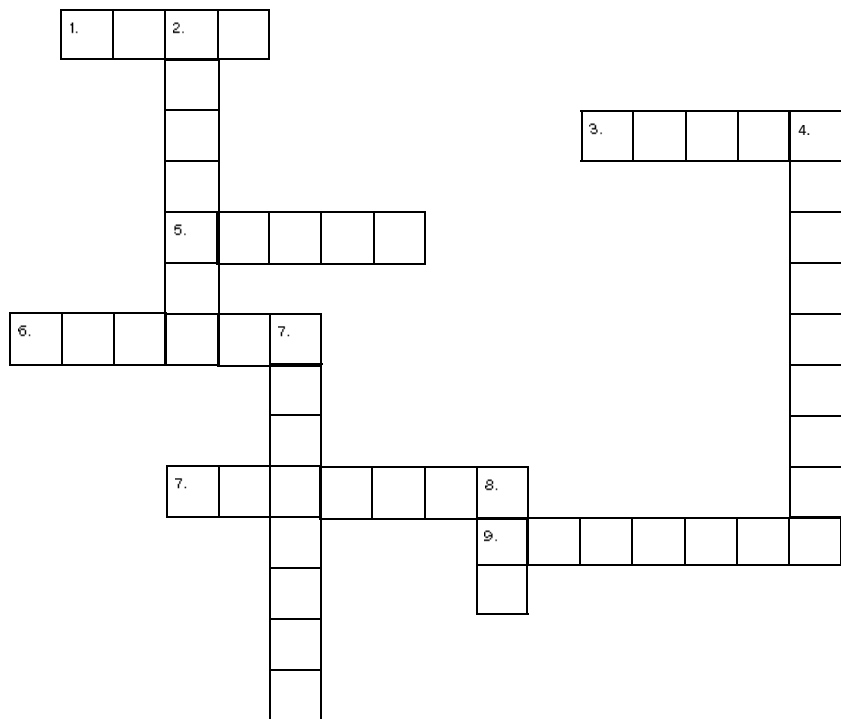
Answer the questions below to complete the crossword

Across

- The first Gallery director's name was Jennifer _____
- Works by Hood, Bell and Lebrocque all feature _____
- Artists from Goulburn are called _____ artists
- The exhibition of the permanent collection is called Goulburn _____
- A person that designs and plans an exhibition is called the _____
- Artworks are sometimes referred to as art _____

Down

- The permanent collection was started with a donation of 4 key works called The _____ Bequest
- 'Torana' by Quilty and 'Big Merino by Knight are _____
- An artist that is at the start of their career is called _____
- Two of the most notable works in the permanent collection are small paintings by ___ de Maistre



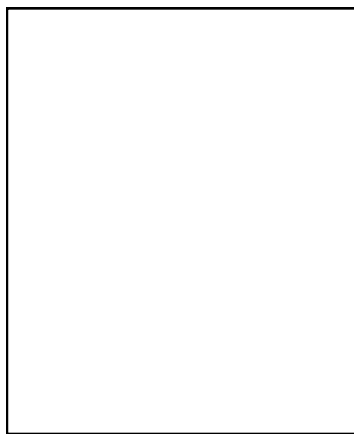
Once upon a time

Check out the work by Kendal Murray. There are some pretty crazy aspects in the work. A goose is trying to drive a tractor, while things are falling out of the back, a woman is tending to the garden and the whole scene is taking place on the side of a purse! Use your imagination and write a short story about the scene using the title of the work as the opening sentence:

Produce Goose, on the Loose. _____

And then...

Draw what happens next in the story in the box below.



Kendal Murray, *Produce Goose, on the Loose*, 2014, Purse, plastic figures, imitation flowers, 10 x 12 x 10 cm



For the big ones

Stage 6 (16-18 years old) and any fun, art-loving adults!

Gallery life

There are many types of galleries that exist for different reasons. Make a list of characteristics under each of the three types of galleries below.

Regional/public

Commercial

Artist-run initiatives

Jenny Bell, *Marino 1*, 2013, Charcoal on paper, 42 x 59.5 cm



Structural Frame

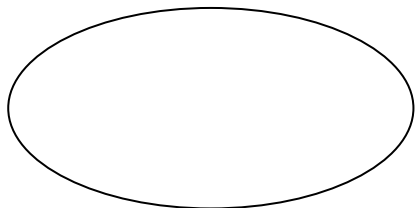
Consider the charcoal drawings of sheep by Jenny Bell and make a list of words you would use to describe the works

Cultural Frame

Permanent collections can tell a story and history of place. Select three works from the Goulburn collection. What is common between the three works that you have chosen? Why do you think these works were chosen for the collection and what comment does their inclusion in the collection have on the culture of Goulburn?

Subjective Frame

The work by A-F Fulgence shows a pig hunting dog wearing many collars and chains. Using one word, write your response to the work in the circle below.



A-F Fulgence, *Who Was Fitted With Collar And Chain*, 2008, Oil on AA Grade plywood, 120 x 110 cm

Postmodern Frame

Choose an artwork from Goulburn Bustle that you consider 'postmodern'. Circle the postmodern devices the artist has employed in creating the work. Write the title of the work and artist name in the space provided.

Irony

Appropriation

Hyperrealism

Humour

Non-traditional

New media

Conceptual Framework

Select an artwork from the show. Explain your interpretation of the artists intention. Why do you think you respond in this way (have you had a particular experience or hold a belief that might influence your response)? _____

How has the artist illustrated this message to the viewer (what symbols or cues have been used in the work)? _____

Image front: Jasper Knight, *Big Merino*, 2011, Enamel on board, 60 x 60 cm



Goulburn Regional Art Gallery is supported by the NSW government through Create NSW