

goulburn.art

REGIONAL GALLERY



How Does Your Garden Grow?
3 February– 18 March 2017

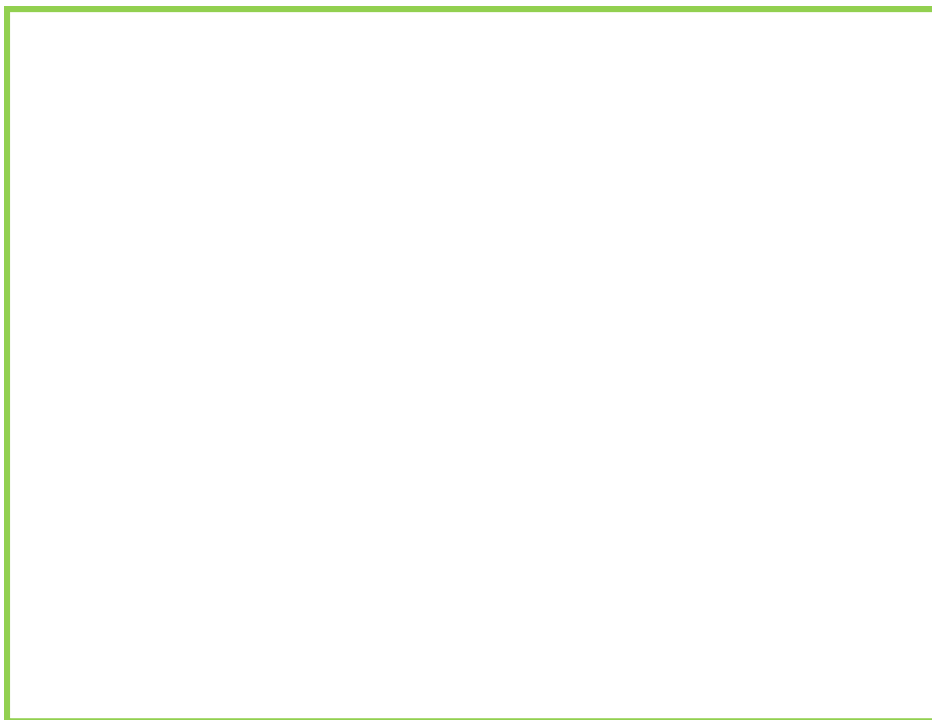
Kids art trail



ABOUT THE ART TRAIL...

This art trail has been produced by Education Officer Sally O'Neill, Goulburn Regional Art Gallery for the exhibition *How Does Your Garden Grow?* **goulburn.art** REGIONAL GALLERY curated exhibition, 3 February– 18 March 2017. The art trail has been designed for students of any age to further their understanding of the content of the show through participating in small targeted theory and practical cross curricular activities.

How does your garden grow?



There are many different types of gardens.

Imagine your dream garden. What would grow there? What would live there? What sort of things would you do in your garden?

Draw a picture of your dream garden in the space above.

Works in Focus– ANNA CULLITON

Anna's work *Kanimbla Dreaming* is about the restoration of the land around her family home in an area called Kanimbla Valley.

What do you think the artist is 'dreaming' about? _____

Can you name the native flower in the photo of *Kanimbla Dreaming, Flowers* below? Which Australian state does the flower represent?

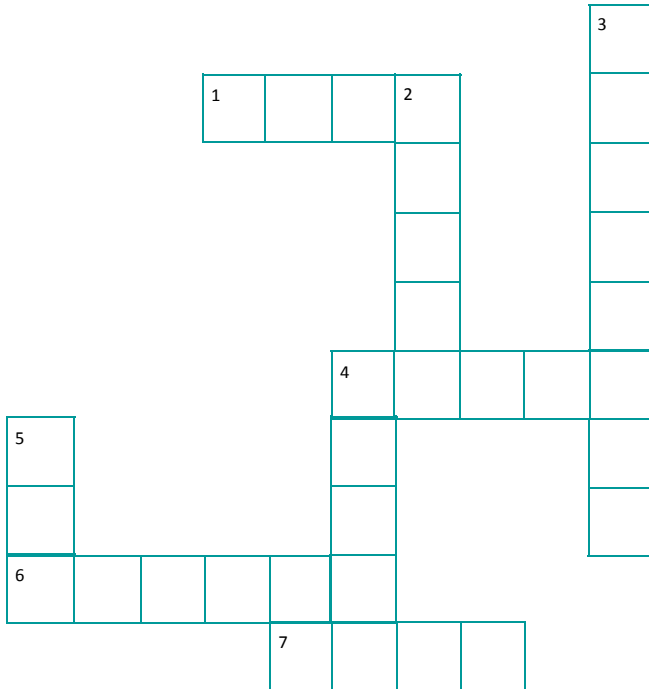
A sugar glider is a type of possum native to Australia. Can you guess what it might like to eat? _____



IMAGE CREDIT: Anna Culliton, *Kanimbla Dreaming, Flowers (detail)*, 2017, Glazed Earthenware, 48 x 36 x 30 cm

Crossword

Fill in the crossword below by answering the following questions



ACROSS

1. What a seed needs to do to become a plant
4. The usual colour of grass
6. The animal found in Anna Culliton's 'Kanimbla Dreaming' works
7. Insects found in the garden that make honey

DOWN

2. Plants need _____ and sun to grow
3. The person who looks after the garden
4. Name of an ornament of an old man found in the garden
5. The thing you connect your hose to

Works in Focus– Erica Seccombe

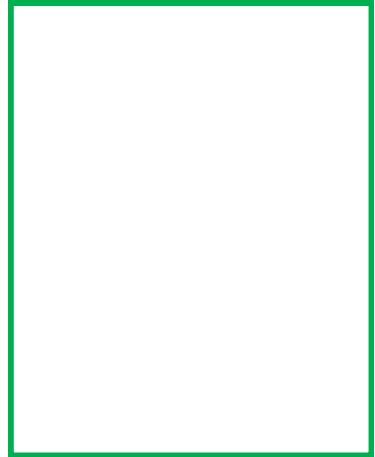
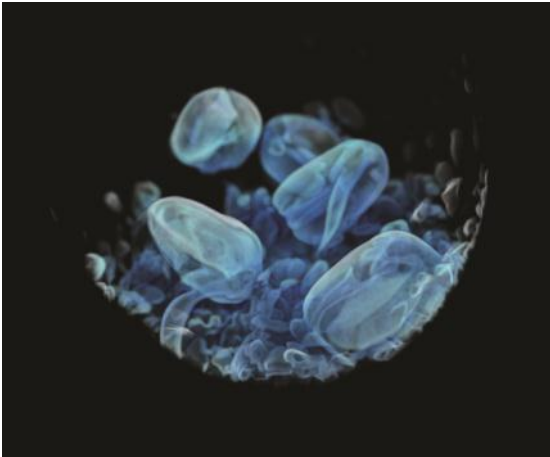


IMAGE CREDIT: Erica Seccombe, *Out of Season (still)*, 2016, Single channel video, 2.8mins

Out of Season is a film of a germinating seed.

A seed germinates underground before sprouting out of the ground as a seedling or plant. Can you think of anything else that grows unseen? _____

What sort of plant do you think the seed in *Out of Season* grows to become? Draw a picture of the plant in the box above.

True or False

Circle the correct answer for the following questions.

All plants need sun to grow.....True/False

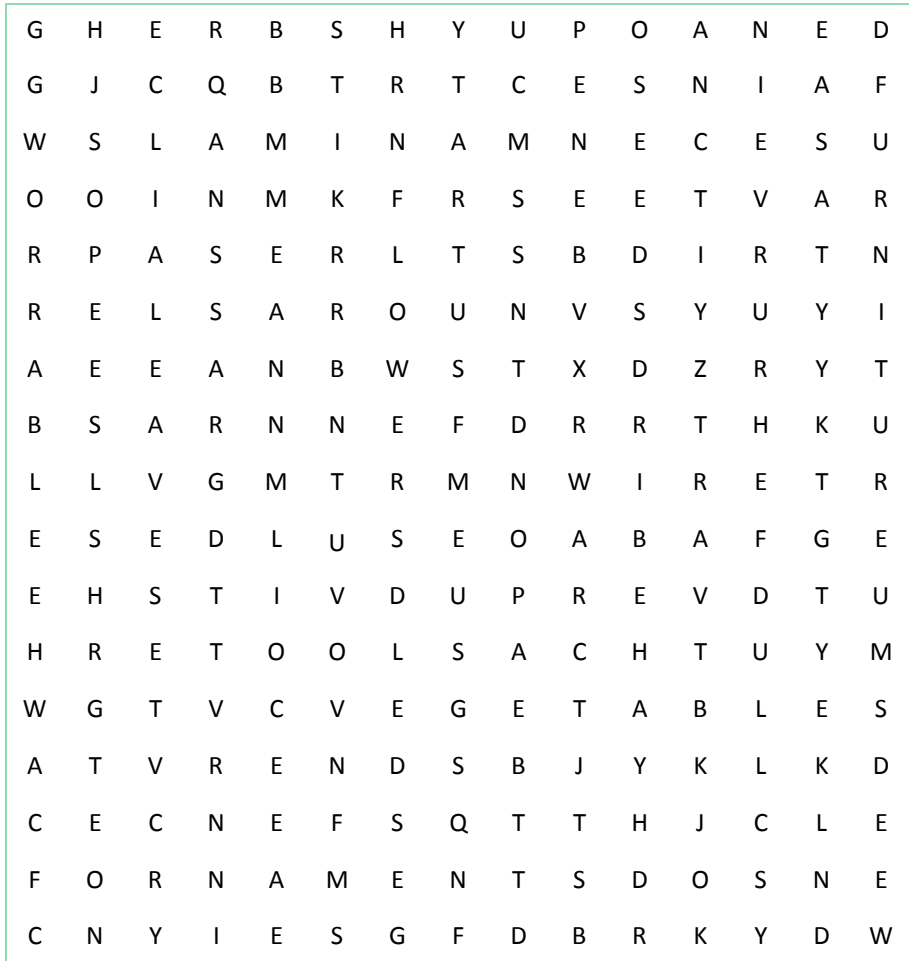
A garden has to be outside.....True/False

'Germination' is when you catch germs and get sick.....True/False

If I eat seeds, they can germinate in my belly.....True/False

Garden Find a Word

Find the garden items listed in the find-a-word below. Can you think of anything we have missed?



ANIMALS

FRUIT

LEAVES

SEEDS

BIRDS

FURNITURE

ORNAMENTS

TOOLS

DIRT

GRASS

PLANTS

VEGETABLES

FENCE

HERBS

POND

WEEDS

FLOWERS

INSECT

ROCKS

WHEELBARROW

Works in Focus– KEVIN CHIN

This work explores the different ways gardens are used by different cultures.

This work is of a garden in temple grounds in Indonesia. How is this garden different to gardens you might see in Australia?

The Indonesian word 'merawat' means both to tend to the garden and to look after someone. Who is tending to the garden in Kevin Chin's work? _____

Who are the 'scavengers' in Kevin Chin's work? _____

IMAGE CREDIT: Kevin Chin, *Scavengers*, 2017, Oil on Italian linen, 183 x 147 cm. Kevin Chin is represented by THIS IS NO FANTASY + dianne tanzer gallery.



Story time

'The Tiny Seed' by Eric Carle

'Inch By Inch' by Leo Lionni

'The Curious Garden' by Peter Brown

'Planting a Rainbow' by Lois Ehlert

'Isabella's Garden' by Ernest Blese

'Bugs in the Garden' by Beatrice Alemagna

Word Scramble

Rearrange the letters below to create some of the things a garden need to grow

M C P O S O T	— — — — —
R W T E A	— — — —
N L I S G H U T	— — — — —
R T I D	— — — —
C S T N E I S	— — — — —
E M I T	— — — —
R A C E	— — — —
S T R N U E I N T	— — — — —

Find the odd one out

Circle the word in each row that doesn't fit with the others

- | | | | | | |
|---|---------|-----------|--------|-----------|-----------|
| 1 | PANSY | CAT | DAISY | ROSE | SUNFLOWER |
| 2 | BERRIES | TOMATO | GRAPES | SNAKE | LEMON |
| 3 | BEETLE | BUTTERFLY | ROCK | ANT | BEE |
| 4 | SHOVEL | HOSE | BUCKET | SECATEURS | FLOWER |
| 5 | APPLE | CARROT | BEANS | CABBAGE | CAPSICUM |

My favourite artwork is.....

.....

Created by.....

And I like it because.....

.....

.....

Label our plant

Can you label the parts of the plant opposite with the following words?

PETALS

FLOWERS

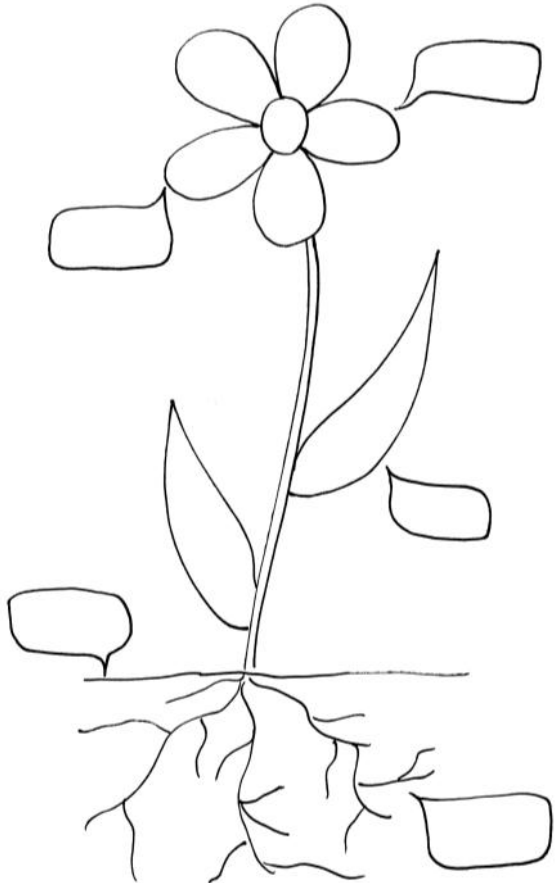
LEAVES

ROOTS

DIRT

What part of the plant grows beneath the surface? _____

What part of the plant does a bee pollinate?



Works in Focus– KAYO YOKOYAMA

What materials have been used to make this work? How do you think it has been made? _____

What do you think would happen if someone ‘turned the tap off’? _____

Glass is very fragile. Why do you think the artist chose to draw the landscape in the glass? What might this mean? _____

Sometimes we use our garden taps to water the garden. Draw something else you can use to water the garden in the box provided.



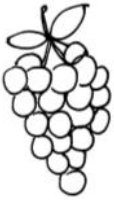
IMAGE CREDIT: Kayo Yokoyama, *Beginning II*, 2016, Engraved glass, metal. Kayo Yokoyama is represented by Lost Bear Gallery, Katoomba.

Where do they grow?

Do you know where each of these fruits and vegetables grow? Draw a line connecting each fruit or vegetable with the plant on which it grows.

Do you know which are the fruits and which are the vegetables? Colour in the fruit.

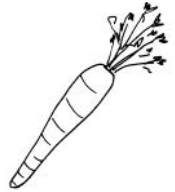
Circle your favourite fruit or vegetable



GRAPES



TREE



CARROT



BANANA



BUSH



PUMPKIN



BLACKBERRY



VINE



APPLE



TOMATO



UNDERGROUND



STRAWBERRY

goulburn.art REGIONAL GALLERY
Cnr Bourke & Church Sts Goulburn
Open Mon-Fri 9-5 Sat 1-4
Closed Sunday & Public Holidays
Email: artgallery@goulburn.nsw.gov.au
Phone: 4823 4494
www.grag.com.au
FREE ENTRY



goulburn.art REGIONAL GALLERY is supported by the NSW Government through Arts NSW

IMAGE CREDIT FRONT : Carolyn Young, *Cottage Garden*, 2016, Photograph (70 cmØ), 74 x 74 cm (framed)